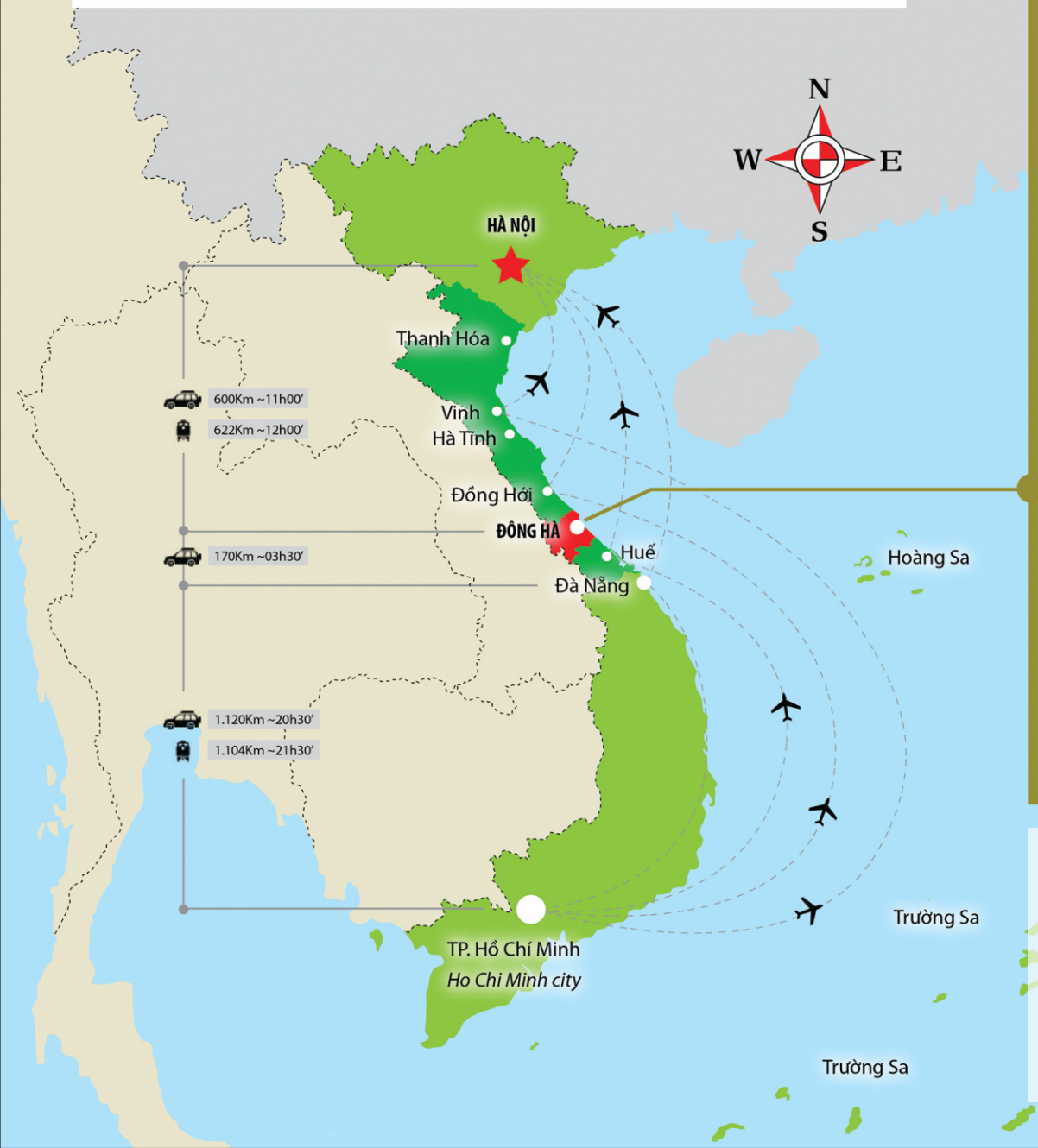




THE PEOPLE'S COMMITTEE OF QUANG TRI PROVINCE

LIST OF PRIORITY PROJECTS CALLING FOR INVESTMENT IN QUANG TRI PROVINCE FROM 2021 TO 2025





A detailed map of Quảng Bình Province, Vietnam, showing its districts and neighboring regions. The map includes the following districts: H. VINH LINH (Vinh Linh district), H. GIO LINH (Gio Linh district), H. HƯƠNG HOÀ (Huong Hoa district), H. CAM LÔ (Cam Lo district), H. TRIỆU PHONG (Thieu Phong district), H. ĐẮK RÒNG (Dack Rong district), H. HẢI LĂNG (Hải Lăng district), and H. KHUẤT LÂM (Khuat Lam district). The map also shows the neighboring regions of QUẢNG BÌNH Province to the north, THỪA THIÊN - HUẾ Province to the south, and CHDCND LÃO (LAO PDR) to the west. The Eastern Sea (BIỂN ĐÔNG) is to the east. Key locations marked include Hố Xá, Gio Linh, Cam Lộ, Krông-Khang, Khe Sanh, and Hải Lăng. The map also shows the location of H. ĐẢO CỎ CỎ (Cỏ Cỏ island district) in the Eastern Sea.


**QUANG TRI INVESTMENT, TRADE AND TOURISM PROMOTION AGENCY (IPA)**

45 Hung Vuong Str., Dong Ha city, Quang Tri province, Viet Nam


 0233.3720777

 0233.3852.827


 lpa@quangtri.gov.vn - ipaquangtri@gmail.com



 lpa.quangtri.gov.vn


LIST OF PRIORITY PROJECTS CALLING FOR INVESTMENT IN QUANG TRI PROVINCE FROM 2021 TO 2025




ENERGY INDUSTRY





04 projects



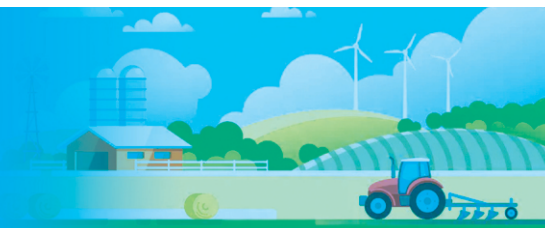
| NO. | PROJECT TITLE | ESTIMATED INVESTMENT SCALE | ESTIMATED COST (MILLION USD) | POSSIBLE LOCATION | INVESTMENT FORM |
|-----|---|---|---------------------------------|--|-------------------------|
| 1 | Hai Lang LNG Power Plants | Capacity: 4,500 MW Area: 130.0 ha | 4,500 | Quang Tri South East Economic Zone (Hai An/Hai Ba commune, Hai Lang district) | Joint Venture, IPP |
| 2 | Hai Lang LNG Power Plant no.1 | Capacity: 1,500 MW Area: 91.5 ha | 1,700 | Quang Tri South East Economic Zone (Hai An/Hai Ba commune, Hai Lang district) | Joint Venture, IPP |
| 3 | Manufacturing factory of technical components and spare parts for renewable energy | 10,000 to 100,000 tons of products/year | 5 - 40 | Quan Ngang Industrial Park; Ho Xa Northwest Industrial Park; Lao Bao Special Commercial -Economic Zone | 100% investors' capital |
| 4 | Solar panel manufacturing factory | Depending on production capacity and market demand | 5 - 10 | Ho Xa Northwest Industrial Park; Lao Bao Special Commercial -Economic Zone; Quang Tri South East Economic Zone | 100% investors' capital |





FOOD PROCESSING AND AGRICULTURAL PRODUCTS

10 projects



| NO. | PROJECT TITLE | ESTIMATED INVESTMENT SCALE | ESTIMATED COST (MILLION USD) | POSSIBLE LOCATION | INVESTMENT FORM |
|-----|--|--|---------------------------------|---|-------------------------|
| 01 | Food processing factory for consumption and export | 50,000 tons of all kinds of products / year | 5 - 15 | Economic zones and industrial parks in the province | 100% investors' capital |
| 02 | Manufacturing factory of wine, beer, and soft drinks | 50 million liters of all kinds of products / year | 20 - 40 | Economic zones and industrial parks in the province | 100% investors' capital |
| 03 | Manufacturing factory of cooking oil | 500,000 liters of product/year | 5 - 10 | Lao Bao Special Commercial -Economic Zone; Industrial parks in the province | 100% investors' capital |
| 04 | Manufacturing factory of raw materials for animal feed, cattle and poultry | 10,000 tons of products/year | 5 - 15 | Industrial parks in the province | 100% investors' capital |
| 05 | Agricultural food processing factory | 10,000 tons of products/year | 5 - 10 | Lao Bao Special Commercial -Economic Zone; Industrial parks in the province | 100% investors' capital |
| 06 | High-tech seafood processing and exporting factory | 50,000 tons of products/year | 5 - 15 | Quang Tri South East Economic Zone | 100% investors' capital |
| 07 | High-tech shrimp farming project | Developing a model of high-tech shrimp farming in the direction of intensive farming to ensure food safety and meet export market standards. Area: 150ha | 18.2 | Vinh Thai commune, Vinh Linh district, Quang Tri province | 100% investors' capital |
| 08 | Manufacturing factory of nutritional drinks from rice | 10 million liters/year | 3.3 | Hai Lang District | 100% investors' capital |
| 09 | Manufacturing factory of nutritional powder from corn and peanut | 10,000 tons/year | 1.5 | Hai Lang District | 100% investors' capital |
| 10 | Factory of extracting rice bran oil | 5,000 tons/year | 3 | Hai Lang District | 100% investors' capital |



17 projects



| NO. | PROJECT TITLE | ESTIMATED INVESTMENT SCALE | ESTIMATED COST (MILLION USD) | POSSIBLE LOCATION | INVESTMENT FORM |
|-----|--|--|------------------------------|---|-------------------------|
| 01 | Manufacturing plant of interior and exterior decoration materials | Depending on production capacity and market demand | 5 - 10 | Quan Ngang Industrial Park; Ho Xa Northwest Industrial Park; Lao Bao Special Commercial -Economic Zone; Quang Tri South East Economic Zone | 100% investors' capital |
| 02 | Manufacturing plant of wood-based panel and wood products | 20,000 to 50,000 m3/year | 50 - 100 | Quan Ngang Industrial Park; Ho Xa Northwest Industrial Park; Lao Bao Special Commercial -Economic Zone; Quang Tri South East Economic Zone | 100% investors' capital |
| 03 | Manufacturing plant of crystal glass and silicate products | 20,000 tons of products/year | 5 - 15 | Ho Xa Northwest Industrial Park; Quang Tri South East Economic Zone | 100% investors' capital |
| 04 | Manufacturing plant of engineering plastics | 10,000 tons of products/year | 5 - 15 | Quan Ngang Industrial Park; Ho Xa Northwest Industrial Park; Lao Bao Special Commercial -Economic Zone | 100% investors' capital |
| 05 | Manufacturing plant of cotton, silk and yarn | 10,000 tons of products/year | 5 - 10 | Ho Xa Northwest Industrial Park; Lao Bao Special Commercial -Economic Zone; Quang Tri South East Economic Zone | 100% investors' capital |
| 06 | Mechanical precision factory | 3,000 tons of products/year | 10 - 15 | Quan Ngang Industrial Park; South Dong Ha Industrial Park; Ho Xa Northwest Industrial Park; Lao Bao Special Commercial -Economic Zone; Quang Tri South East Economic Zone | 100% investors' capital |
| 07 | Manufacturing and assembling plant of electrical, electronic and electrical refrigeration products | 10,000 products/year | 5 - 15 | Lao Bao Special Commercial -Economic Zone; Industrial parks in the province | 100% investors' capital |
| 08 | Manufacturing plant of accessories for textile industry and leather shoes | 5,000 tons of products/year | 5 - 10 | Economic zones and industrial parks in the province | 100% investors' capital |
| 09 | Manufacturing and assembling plant of equipment and engines for cars, motorcycles, agricultural machines and auxiliary industrial products | Equipment, engines for cars, motorcycles, agricultural machines and auxiliary industrial products: 200,000 products/year | 5 - 50 | Lao Bao Special Commercial -Economic Zone; Industrial parks in the province | 100% investors' capital |

| NO. | PROJECT TITLE | ESTIMATED INVESTMENT SCALE | ESTIMATED COST (MILLION USD) | POSSIBLE LOCATION | INVESTMENT FORM |
|-----|--|---|---------------------------------|---|-------------------------|
| 10 | Manufacturing plant of rubber products | 50,000 tons of products/year | 10 - 20 | Ho Xa Northwest Industrial Park; Economic zones in the province | 100% investors' capital |
| 11 | Manufacturing plant of gypsum products | 10,000 m2 of products/year | 5 - 10 | Quan Ngang Industrial Park; Ho Xa Northwest Industrial Park; Lao Bao Special Commercial -Economic Zone | 100% investors' capital |
| 12 | Garment factory of leather shoes for export | Employing 5,000 to 10,000 workers | 10 - 20 | Quan Ngang Industrial Park; Ho Xa Northwest Industrial Park; Economic zones in the province | 100% investors' capital |
| 13 | Cold-storage warehouse to store and preserve post-harvesting agricultural and aquatic products | 50,000 tons of products/year | 5 - 10 | Quan Ngang Industrial Park; Ho Xa Northwest Industrial Park; Economic zones in the province | 100% investors' capital |
| 14 | High-tech aquaculture farms | Investing in building a high-tech agricultural complex under a closed model that associates the production of high-quality seedlings with production and processing, supplying for domestic consumption and export. Investors can propose a project scale that suits their needs. | 5 - 10 | Economic zones in the province | 100% investors' capital |
| 15 | High-tech manufacturing plant of hollow brick | 48 millions of bricks/year | 4.2 | Hai Chanh Industrial Complex | 100% investors' capital |
| 16 | Fabrication and installation of prefabricated houses and industrial factories | 1,000 tons/year | 1 | Dien Sanh Industrial Complex | 100% investors' capital |
| 17 | Building a factory to manufacture and assemble digital electronic and telecommunications products | 1,000 products/year | 5 | Quan Ngang Industrial Park; Quang Tri South East Economic Zone | 100% investors' capital |





INFRASTRUCTURE



17 projects

| NO. | PROJECT TITLE | ESTIMATED INVESTMENT SCALE | ESTIMATED COST (MILLION USD) | POSSIBLE LOCATION | INVESTMENT FORM |
|-----|---|--|---------------------------------|---|-----------------------------------|
| 01 | Wastewater treatment system | Depending on the amount of wastewater of each area | 5 - 20 | South Dong Ha Industrial Park; Ho Xa Northwest Industrial Park; Quang Tri South East Economic Zone | 100% investors' capital or PPP |
| 02 | Industrial estate in the Quang Tri South East Economic Zone (phase 1) | Investment and business in infrastructure of the economic zone according to the planning approved by the Prime Minister. Area: 1,000 ha. | 200 - 220 | Quang Tri South East Economic Zone | 100% investors' capital or PPP |
| 03 | Construction of La Lay International Border Gate's Infrastructure | Investment in developing technical infrastructure of La Lay International Border Gate according to the planning approved by the Prime Minister. Area: 10-20 ha. | 2 - 5 | La Lay international border gate (A Ngo commune, Dakrong district) | 100% investors' capital or PPP |
| 04 | Industrial estate project in Lao Bao Special Commercial -Economic Zone | Investment and business in infrastructure of the border gate economic and commercial zone according to the planning approved by Prime Minister. Area: 365 ha. | 100 - 120 | Lao Bao Special Commercial -Economic Zone (Lao Bao town, Huong Hoa district) | 100% investors' capital |
| 05 | Construction of bonded warehouses and logistics centers | Area: Over 10 ha. | 5 - 15 | Quang Tri South East Economic Zone; Lao Bao Special Commercial -Economic Zone; La Lay international border gate | 100% investors' capital |
| 06 | ICD dry port at the intersection between National Highway 15D and Cam Lo - Tuy Loan highway | Scale in the period of 2020: 10-20ha; Scale after 2030: over 30ha. | 6.6 | Hai Lang district, Quang Tri province | PPP |
| 07 | National Highway 15D, section from Cam Lo - La Son highway to the west branch of Ho Chi Minh road | About 34km long, grade IV mountain road, 7.5m wide roadbed; 5.5m wide road surface; E-commerce 1,790 billion VND. | 80 | Districts: Hai Lang, Dakrong | PPP |

| NO. | PROJECT TITLE | ESTIMATED INVESTMENT SCALE | ESTIMATED COST (MILLION USD) | POSSIBLE LOCATION | INVESTMENT FORM |
|-----|---|---|---------------------------------|---|-----------------------------|
| 08 | Infrastructure of residential area on both sides of Con Co street GD3, ward 2. | Forming an inter-regional residential, commercial and service urban area. Area: 7.5ha. | 3 | Ward 2, Dong Ha City | Bidding to select investors |
| 09 | Urban area on both sides of Thuan Chau street | Building new urban areas, forming a modern urban housing fund in terms of architectural planning and infrastructure. Area: 16ha. | 6 | Dong Luong Ward, Dong Ha City | Bidding to select investors |
| 10 | Urban area in the East of Dong Ha City | Building new urban areas, forming a modern urban housing fund in terms of architectural planning and infrastructure. Area: 110ha. | 38.7 | Ward 2, Dong Le Ward, Dong Ha City | Bidding to select investors |
| 11 | Infrastructure of Con Mon residential area, Dong Thanh ward | Building a urban area, forming a modern urban housing fund in terms of architectural planning and infrastructure. Area: 5 ha. | 1.1 | Dong Thanh Ward, Dong Ha City | Bidding to select investors |
| 12 | Urban area on both sides of the road connecting Ward 2, Dong Luong ward, and Dong Le ward | Building a urban area, forming a modern urban housing fund in terms of architectural planning and infrastructure. Area: 25 ha. | 5.4 | Ward 2, Dong Luong Ward, Dong Le Ward, Dong Ha City | Bidding to select investors |
| 13 | Villa area around the lake Km6 | Forming a high-quality ecological urban area with a synchronous technical and social infrastructure system. Area: 5 ha. | 1.1 | Ward 4, Dong Ha City | Bidding to select investors |
| 14 | Khe May Lake Ecological Resort | Investing in urban services and commerce, forming a modern urban housing fund in terms of architectural planning as well as infrastructure. Area: 7ha. | 2 | Ward 3, Dong Ha City | Bidding to select investors |
| 15 | Dong Ha city solid waste treatment plant | Treatment of domestic waste, domestic wastewater, reducing environmental pollution caused by solid waste and wastewater. Area: 10 ha. | 5.5 | Dong Luong Ward, Dong Ha City | 100% investors' capital |
| 16 | High-tech waste treatment and recycling plant | 1,000 tons of domestic waste/day and night | 30 - 35 | Huong Hoa district | 100% investors' capital |
| 17 | Industrial and hazardous waste treatment plant | Capacity of 20,000 tons of industrial solid waste and 2,000 tons of hazardous waste | 5 | Hai Lang district, Trieu Phong district | 100% investors' capital |



SERVICES - TOURISM



19 projects



| NO. | PROJECT TITLE | ESTIMATED INVESTMENT SCALE | ESTIMATED COST (MILLION USD) | POSSIBLE LOCATION | INVESTMENT FORM |
|-----|--|---|---------------------------------|--|-----------------------------|
| 01 | Golf course | Area: 10 - 50 ha | 5 - 30 | Quang Tri South East Economic Zone | 100% investors' capital |
| 02 | Vay Village tourism - service area | Area: 10 - 20 ha | 10 - 20 | Lao Bao Special Commercial - Economic Zone | 100% investors' capital |
| 03 | General vocational education and training school | Vocational training for 20,000 workers | 5 - 10 | Lao Bao Special Commercial -Economic Zone; Quang Tri South East Economic Zone | 100% investors' capital |
| 04 | Hotels, tourism, services, resorts | Depending on the ability of investors and market demand. | 5 - 30 | Service - Tourism Area of Southeast Economic Zone | 100% investors' capital |
| 05 | Invest in infrastructure of An Trung ecological lagoon | Area: 21.5 ha | 3 | Cua Viet town, Gio Linh district | 100% investors' capital |
| 06 | Trung Chi Lake park | Area: 55 ha | 5.6 | Dong Luong Ward, Dong Ha City | 100% investors' capital |
| 07 | Khe May Lake park | Area: 65 ha | 6.5 | Ward 3, Dong Ha City | 100% investors' capital |
| 08 | Ecotourism Area of Km6 Lake | Area: 15 ha | 3 | Ward 4, Dong Ha City | 100% investors' capital |
| 09 | Exhibition and Trade Fair Area of the city | Area: 7 ha | 1.3 | Dong Thanh Ward, Dong Ha City | 100% investors' capital |
| 10 | Project of Ward 5 Market and Market Quarter | Area: 3 ha | 10.7 | Ward 5, Dong Ha City | Bidding to select investors |
| 11 | Vinh Thai tourism - service area | The category of hotels and resorts is rated from 3 to 5 stars. Investors can propose a project scale in accordance with their needs. Area: 137ha | 141 | Vinh Thai commune, Vinh Linh district | 100% investors' capital |
| 12 | Con Co island tourism infrastructure | The category of hotels and resorts is rated from 3 to 5 stars; artificial beach, build a model of scuba diving to see corals, explore the ocean and forest-based eco-tourism area. Investors can propose a project scale in accordance with their needs. Area 50 ha. | 50 | Con Co island district | 100% investors' capital |

| NO. | PROJECT TITLE | ESTIMATED INVESTMENT SCALE | ESTIMATED COST (MILLION USD) | POSSIBLE LOCATION | INVESTMENT FORM |
|-----|--|--|---------------------------------|---|-------------------------|
| 13 | Eco-tourism area of Klu hot spring | Investing in building a general tourist area for sightseeing, relaxation and entertainment associated with cultural activities of the Pa Co - Van Kieu ethnic groups. Investors can propose a project scale in accordance with their needs. Area 7.5ha | 10 | Dakrong Commune, Dakrong District | 100% investors' capital |
| 14 | My Thuy ecotourism - service area | Building technical infrastructure, modern resorts; community tourism service area. Investors can propose a project scale in accordance with their needs. Area 100ha | 50 | Hai An Commune, Hai Lang District | 100% investors' capital |
| 15 | Thong Nhat Park at the special national relic site on Hien Luong - Ben Hai River Banks | Area: 50 ha | 15 | Hien Luong – Ben Hai special national relic area | 100% investors' capital |
| 16 | Tan Do lake eco-tourism area | Investment in eco-tourism areas for sightseeing, relaxation, entertainment associated with mountains, forests and cultural activities in the western part of Quang Tri. Investors can propose a project scale in accordance with business development plan. | 20 - 25 | Huong Hoa District | 100% investors' capital |
| 17 | Truong Son tourism - service area | Investing in eco-tourism areas for sightseeing, relaxation, entertainment associated with mountains, forests, cultural and spiritual activities associated with Truong Son National Martyrs' Cemetery. Investors can propose a project scale in accordance with their needs. Area: around 100ha | 20 - 25 | Vinh Truong Commune, Gio Linh District | 100% investors' capital |
| 18 | Tourism complex at Sa Mu pass | Investing in construction to become an eco-tourism area and an attractive destination in Quang Tri's tours, contributing to diversifying tourism products and meeting the needs of domestic and international tourists. Investors can propose a project scale in accordance with their needs. | 20 - 25 | Huong Phung and Huong Viet Communes, Huong Hoa District | 100% investors' capital |
| 19 | Tourism and resort area in Tran dam, Trai ravine | Recreation area, sightseeing, tourism services on rivers and streams; preserve landscape and ecological environment. Area: about 100ha | 4 | Hai Le Commune, Quang Tri Town | 100% investors' capital |

Note: Exchange rate 1 USD = 23,148 VND (June 2021)